



villages in partnership



2020 ANNUAL REPORT

When The World Stood Still, **You Moved.**



“There is no safety net in Malawi. If their crops fail, they don’t eat. I have seen first-hand the difference that VIP has made in the villagers’ lives. In the last 10 years, doing God’s work by providing clean water, building schools, and medical clinics, and teaching conservation agriculture, VIP has made a huge impact on the villagers’ lives, lifting many out of crushing poverty.” - Bob Kloss





“They thoughtfully approach all the root causes of extreme poverty together, with a long-term perspective. The best part of VIP is how they treat the villagers they serve with respect, love, and dignity. They provide expertise, education, and resources to help the villagers lift themselves out of poverty - a hand up, not a hand out.” - Trisha De Ieso



OUR MISSION

To build partnerships between villages in the developed world and villages in Malawi to bring about life-changing development for all.

OUR VISION

Is a world in which communities from across the globe work together in partnership to transform each other's lives, so that people are relieved from suffering and can begin to achieve their full potential.



LETTER FROM THE PRESIDENT



Dear Friends,

2020 was an extraordinarily challenging year for us all. Thankfully, however, Malawi's new President took aggressive steps to prevent COVID-19 from getting a foothold in Malawi, and as a result, Malawi has managed to avoid a major outbreak within the country, and the pandemic has had minimal impact in our partner villages.

Our tireless and devoted staff did an amazing job adapting to the new realities of a virtual world - livestream fundraising, video calls, and running an organization with forced social-distancing. Because of their dedication, **VIP was able to thrive in a time of uncertainty**. The pandemic hit shortly before the Water Walk, which is our biggest event of the year, and our team pivoted to a fully virtual event and managed to raise twice as much money as we had in 2019! Not to mention the fact that we were able to complete construction on our secondary school in the midst of a global pandemic. We thank God for our staff, both here and in Malawi, and for all of you, who remained so steadfast in your support of our work despite the challenges you faced. That you continued to selflessly pour out your love and support for our friends in Malawi during such trying times is a true testament to the strength of the bonds of partnership we have developed. For that, we are eternally grateful.

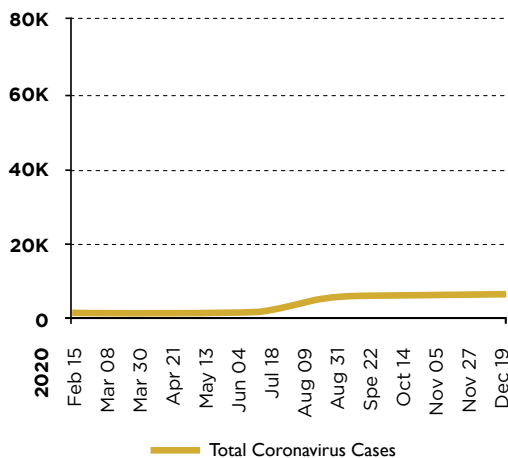
I said last year that through this pandemic, *your hope would bring others hope, your faith would inspire faith, and your love would breed love, and the hope, faith and love you demonstrated throughout 2020 exceeded what we could have imagined*. This Annual Report highlights the many ways that **your generosity made a difference in the lives of thousands of people** — helping to move many of them from the crushing burdens of extreme poverty to a sustainable lifestyle despite all of the trials and tribulations going on in the world around them. Our God is an amazing God who can do amazing things, but we are all charged with being the hands and feet that make those things happen. We could not do the work we do, and achieve the accomplishments summarized in this Annual Report, without you. We are grateful to each and every one of you.

With enduring hope and love,

Bob Rhoad

Bob Rhoad
President, Villages in Partnership

TOTAL CORONAVIRUS CASES IN MALAWI



"Total Coronavirus Cases in Malawi." Worldometer, Worldometers.info, 31 Aug. 2021, srv1.worldometers.info/coronavirus/country/malawi.



Your hope would bring others hope, your faith would inspire faith, and your love would breed love, and the hope, faith and love you demonstrated throughout 2020 exceeded what we could have imagined.

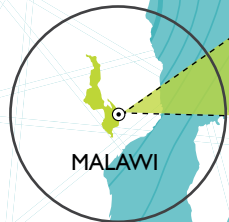


TABLE OF CONTENTS

4	PARTNER VILLAGES
6	VALUES
8	GOVERNANCE & STAFF
10	2020 IMPACT AT A GLANCE
12	THE VIP APPROACH
14	CORE PROGRAMS
16	Water
18	Food Security
22	Economic Development
24	Education
26	Infrastructure
28	Health Care
30	MEDICAL & DENTAL TRIPS
31	FRIENDSHIP TRIPS - BEEKEEPING
32	FINANCIALS
33	DONORS
36	PARTNERS
37	LOOKING FORWARD

VIP
IMPACT
AREA

IMPACTING OVER
21,000
PEOPLE



26
PARTNER
VILLAGES

3
NEW
VILLAGES



OUR VALUES

We never foresaw how much our values would anchor us during times of uncertainty. This past year showed us how deep our relationships are with our brothers and sisters in Malawi. We, in both the US and Malawi, spent much time in prayer for one another - asking God to protect and sustain us all. Each of us witnessed that when times get tough, we must stay true to who we are, and live every value we espouse. For this reason, we feel it is important to highlight our values as a part of looking back on this last year.



When times
get tough,
we must stay
true to who
we are.



LOVE

All of our actions are motivated by our love for God and for all of His children, no matter where they may live. We love our neighbors all over the globe, as we love ourselves.



SUSTAINABILITY

The goal of every VIP project is to empower our partner villages to become self-sustaining communities. We want to equip our communities to thrive without the need for ongoing assistance from VIP or others.



RELATIONSHIP

We strive to know and value all of our partners, including our staff, the chiefs and village elders, grassroots leaders, government agents, donors, and members of our partner communities. We honor the existing village leadership structures and systems already established in our partner communities. We listen to the voices of our partners.



INTEGRITY

We will live our word. We shall act at all times with the highest degree of ethics and accountability which builds trust. We will use the resources entrusted to VIP wisely, in ways that will have a significant impact on the lives of our partners.



HOLISTIC CARE

We are concerned not only about the physical well-being of our partners, but also about their emotional, spiritual, and educational needs.



RECIPROCITY

We expect our partners to invest themselves and their resources in the development of their communities. All beneficiaries are expected to give back to the best of their abilities; every project requires investment and response.



FAITHFULNESS

We understand that making transformational changes in the lives of those living in extreme poverty requires patience, persistence, trust, and time. We are committed to being there for our partners for a long time.



ADAPTABILITY

Within the context of our core values, we are a learning and creative organization. We are flexible and innovative with our partners. We will learn from our mistakes, adapt, and move on.

GOVERNANCE AND STAFF

VIP is proud to announce its formation of a fully registered Non-Governmental Organization in Malawi as of 2020.

Two Organizations, One Mission: to share challenges, solutions, and resources to equip people to lift themselves from extreme poverty.

Since our founding, we recognized that our organizational structure should be deeply connected to our values. Governance and staffing should reflect the nature of partnership - joint investment in identifying, prioritizing, planning and implementing solutions. Furthermore, our operational approach should support project sustainability. To that end, we maintain a robust Malawian staff to implement programs locally. That's why 100% of our program staff has always been Malawian.

In the past, VIP had to operate under the umbrella of a different organization in Malawi, while we pursued becoming a registered Non-Governmental Organization (NGO). VIP is proud to announce its status as a fully registered Non-Governmental Organization in Malawi as of 2020.

We accomplished this by establishing two separate yet very connected organizations--one focused on our USA operations (VIP) and the other on the program operations in Malawi (VIP International). What we collectively call *Villages in Partnership* is now represented by VIP and VIP International. Each organization has its own governing Board of Trustees. The VIP USA Board is responsible for all USA operations along with partner development, fundraising, and strategic planning. They work in collaboration with the VIP International Board, who oversees all program operations in Malawi, partner development in Malawi, and adherence to government regulations and procedures. Three individuals serve on both VIP's Board and VIP International's Board (with two by designation - VIP Board President and VIP Executive Director) to ensure effective communication, promote good relationships, and liaise between the two groups. We believe this new structure will enable us to be more nimble and respond to emergent issues, while further empowering our local staff and partners.

We believe our new structure will enable us to be more nimble and respond to emergent issues, while further empowering our local staff and board.



USA BOARD

Officers

Bob Rhoad

President/Chairman of the Board

Liz Heinzl-Nelson

*Vice President/Founder/
Executive Director*

Stephen Heinzl-Nelson

Chaplain/Founder

Kim Daly

Treasurer

Eileen Gradwell

Secretary

Trustees

Jackie Dyer

Chris Ebling

Lucy Goeke

Tim Golden

Greg Herceg

Paul Huchro

Kim Kleasen

Tom Marrero

Randa Nelson

Stephanie Patterson

Tim Schuler

David Shipman

Chris Woodard

INTERNATIONAL BOARD

Melton Luhanga

Chairman of the Board

Lucy Goeke*

Liz Heinzl-Nelson*

Serah Machinjili

Steven Mauluka

Bob Rhoad*

Jonathan Thorneycroft

*USA Board Members



STAFF

USA

Liz Heinzl-Nelson *Executive Director*

Aaron Shaver *Office Administrator*

Carissa Joyce *Development Coordinator*

MALAWI

Wellings Mwalabu

Country Director

Ernesto Makoka

Program Coordinator

Kefa Kasakula

*Finance and Administrative
Manager, Malawi*

Frank Mwenjemeka

Food Security Officer

Joe Majamanda

Construction and Logistics Officer

Hasley Chavala

Project Accountant

Adrian Kamwendo

Water and Economic Development

Charles Sokoso

Livestock Officer

Madalitso Chakani

Health and Nutrition Officer

Stuart Gonani

Education Officer

Paul Bilayi

Irrigation Technician

Ruth Machemba

Accounts Clerk

Violet Matimati

Health and Nutrition Assistant

Support Staff

Stain Namwera

Office Assistant

Kondwani Mihowa

Transportation Officer

Witman Nsonkho

Driver

Community Workers

**Memory Dama,
Patricia Namtongwe,
Laston Kassimu, Ganizani
Matope, Chimwemwe Khaula,
Wilson Nalivata, Bertha
Chitanda, Nduzani Maluwa**



2020 IMPACT AT A GLANCE



Increased village grain bank participation by **32%**, serving **264 HOUSEHOLDS** yielding over **200,000 POUNDS** (91 metric tons) of maize stored in the village grain banks which resulted in greater food security for the community.



79 VULNERABLE HOUSEHOLDS received goats, a direct result of a successful goat pass-on program and livestock management training.



Vaccinated **19,037 CHICKENS** against the Newcastle Disease providing for a more healthy, nutritious and vibrant community.



Improved access to clean water by rehabilitating **18 COMMUNITY WATER TAP SITES** serving **360 HOUSEHOLDS** in **12 VILLAGES**.



Farmers raised approximately **\$1,258 (MWK 1,025,700)** from sale of maize, onion, tomato and watermelon harvests generated through the Samani and Muluwira Solar Irrigation sites.



Developed **52 VILLAGE SAVING AND LOANS CLUBS** which collectively saved over **\$35,000 (MWK 28,105,220)** among **841 BENEFICIARIES**.



Provided scholarships to **93 SECONDARY STUDENTS** and **20 COLLEGE/UNIVERSITY STUDENTS** to cover tuition, school supplies and uniforms ensuring for a greater chance of future success.



Completed **PHASE II OF CONSTRUCTION** at **ONE HEART SECONDARY SCHOOL** which included a semi-detached house, a septic tank, pit latrines, a school sign and landscaping.



3,788 INDIVIDUALS RECEIVED FREE MEDICAL care as a part of outreach clinics.

VIP APPROACH

VIP seeks to eradicate extreme poverty in the rural villages of Sakata in Malawi.

The World Bank defines extreme poverty as living on \$1.90 a day or less¹. According to the Baseline and Impact Assessment of the Sakata Livelihoods and Community Development Project conducted in 2018, VIP found that 74% of the people in our impact area earn less than \$1 per day. Research further suggests that extreme poverty is caused by lack of resources in six critical areas that are essential to human development: food, water, education, medical care, infrastructure, and economic opportunity. Without adequate resources in each of these areas, extreme poverty traps its victims in a vicious cycle that they cannot break out of on their own.

VIP works across these six critical areas to address poverty at the root and ensure long-lasting change.

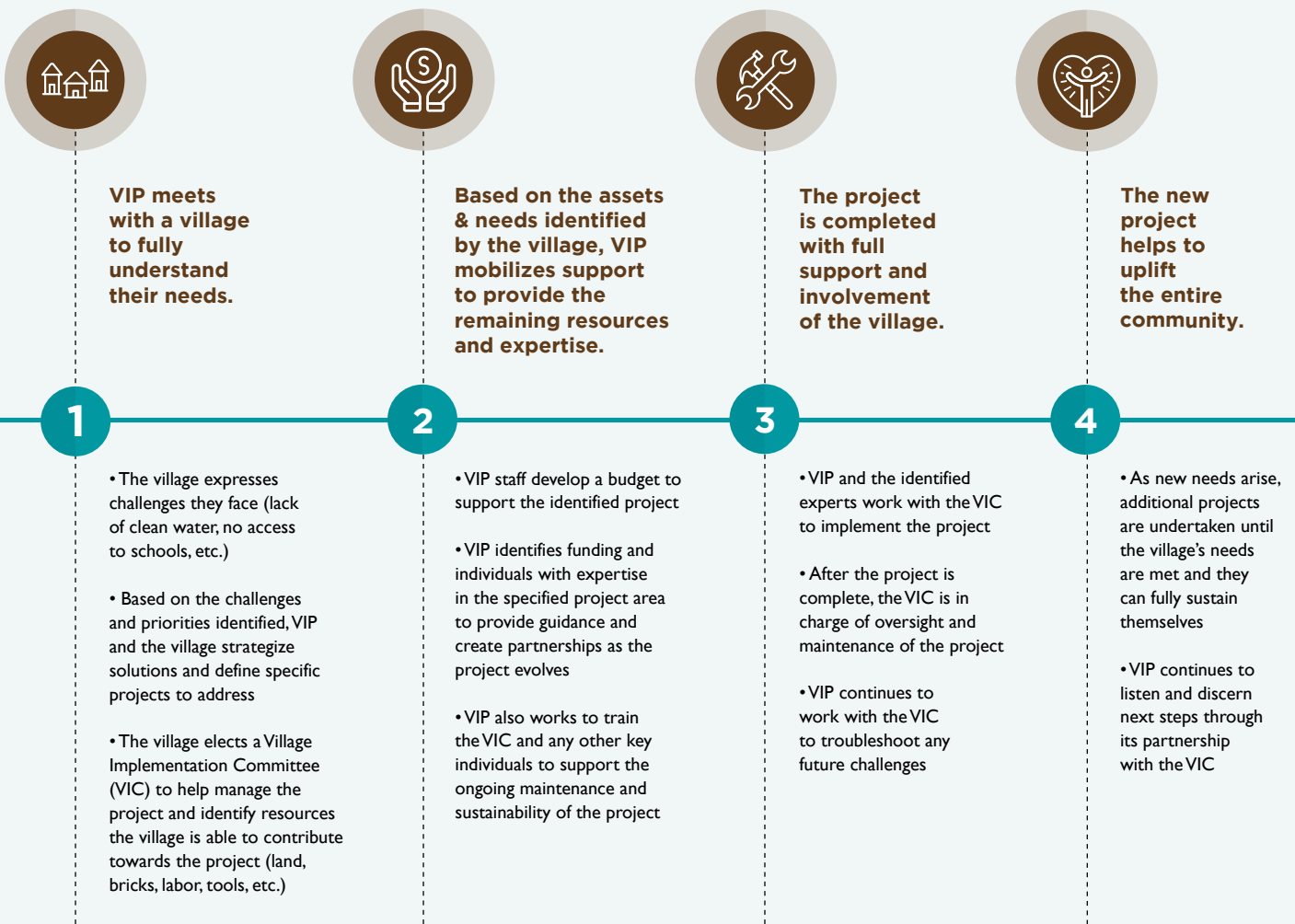


¹Measuring Poverty. (2021, April 16). Retrieved August 25, 2021, from <https://www.worldbank.org/en/topic/measuringpoverty>

VIP's approach is based on an enduring collaborative partnership with the people of Sakata, Malawi. When invited into a village, we work with the community to implement customized programs to address the challenges identified by the community and then work hand in hand to design solutions, and share resources in order to tackle specific needs.

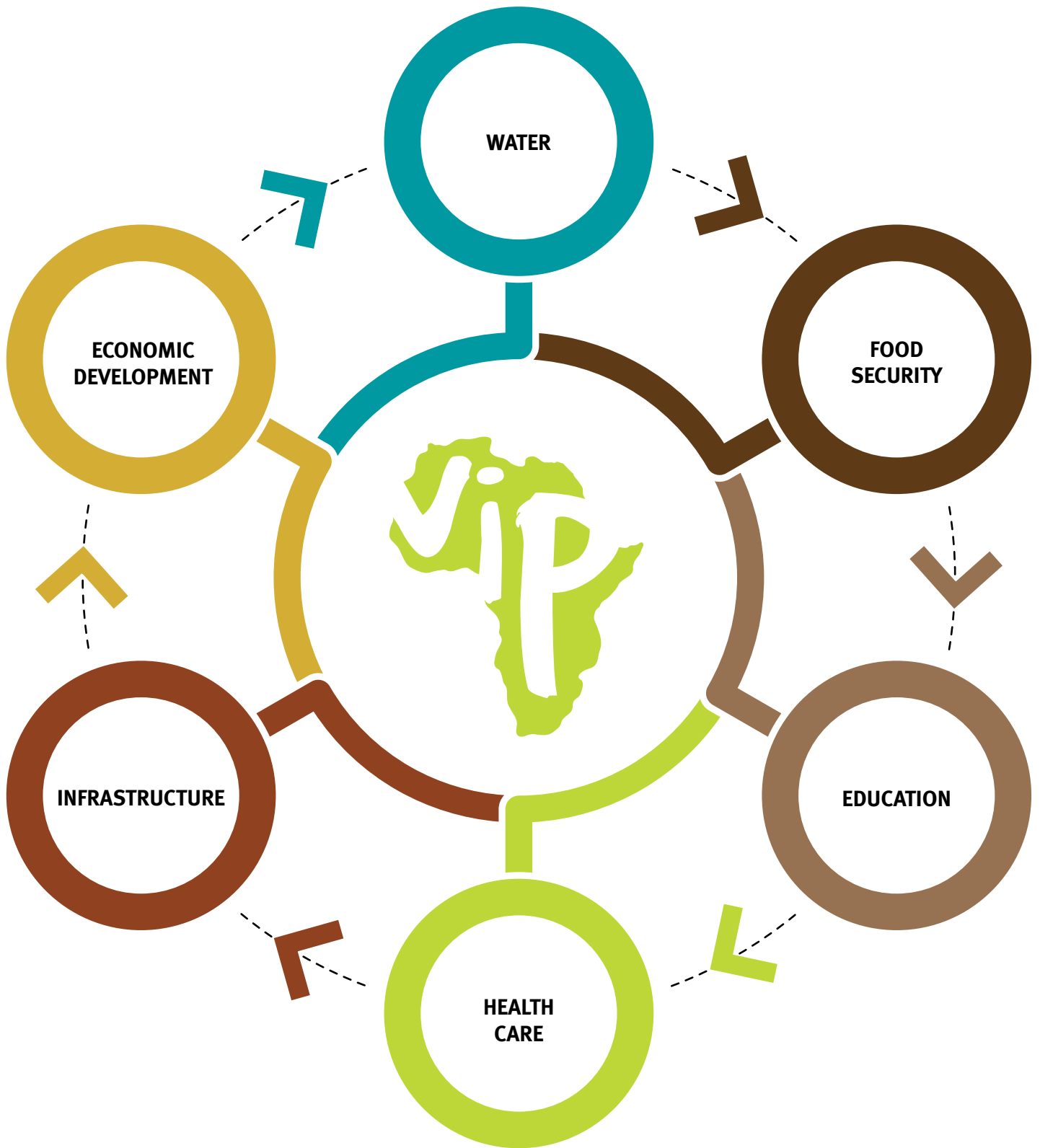
VIP's holistic method develops ownership, increasing sustainability while addressing the interconnected web of root causes of poverty: lack of clean water; food insecurity; poor healthcare; inadequate education; insufficient infrastructure; and lack of economic opportunities.

VIP comes alongside the people as they lift themselves from extreme poverty through the following approach:



THE SIX CRITICAL AREAS OF HUMAN DEVELOPMENT





WATER

Water in Sakata follows its ancient rhythm: annual rainfall compressed into six months, turning the fields green and lush; followed by the dry season from May to October, when riverbeds dry up and water is scarce. Yet clean and plentiful water is a necessity year-round. Investments in water resources are central to improvements in food security, health, and education. While COVID-19 delayed some planned initiatives, VIP continued to make progress on various water projects in 2020.



Hand-washing stations promoted in past years by VIP became more critical than ever, as a key defense against the transmission of COVID-19.

OUTREACH & TRAINING

Education on proper hygiene and sanitation practices remained a priority. Frequent hand washing is proven to reduce cases of debilitating and often preventable diseases like diarrhea which are prevalent in the villages. Training and outreach sessions were conducted to spread awareness of the correct hand washing techniques following the findings of an inspection in VIP's impact area. Of 1,273 households sampled, it was found that 195 households lacked a pit latrine which often results in unhygienic practices and aids in the spread of disease. The low-tech hand-washing stations promoted in past years by VIP became more critical than ever, as a key defense against the transmission of COVID-19.

CONSTRUCTION

To further aid in this effort, VIP partnered with the government and volunteers to install new pit latrines with handwashing facilities at 148 households identified by the inspection. Consequently, coverage of the surveyed 1,273 households with access to such latrines rose from 85% to 96%.

REPAIR OF TAPPED WATER SYSTEMS

Aging tap systems, installed by the Malawian government in the 1960s, were identified as dysfunctional and in need of replacement. The cost of upgrading the tap systems is thousands of dollars less expensive than installing a new borehole. This year VIP repaired 18 aging tap systems that are now operational - funneling water to communal spigots once again. The daily task of fetching water, borne almost exclusively by women, became less onerous and time-consuming as 360 villagers in 12 communities benefited from the repaired systems.



OPERATIONS & MAINTENANCE

To help ensure local control and long-term sustainability of wells and boreholes, intensive training was given in conjunction with the Zomba Water Department to four new area mechanics. These mechanics serviced 23 water points in their first five months on the job and are ultimately responsible for the maintenance and major repairs of a total of 165 water points throughout the community. Their services are paid for by community contributions to their local village water committees, who have themselves received training in leadership and data collection methodologies.

Since its inception, VIP projects have provided clean and accessible water to over 21,000 of our Malawian brothers and sisters, improving health, economic, and educational outcomes.



Team Kids for Malawi led by Angela De Ieso and Rio Yi

2020 WATER WALK

Due to the global pandemic, VIP hosted its first ever virtual Water Walk. As VIP's signature fundraising event, the Water Walk is designed to bring awareness to the millions of people who don't have access to clean water and to raise money to support this and other VIP projects. 35 teams, comprised of hundreds of people from all over the world, walked to support our brothers and sisters in Malawi who must often walk long distances to collect clean water. The event featured original music, program updates, inspirational messages, and dynamic videos highlighting VIP's programs. Raising over \$220,000 dollars and far surpassing prior years, the 2020 Water Walk was a huge success!

FOOD SECURITY

Our impact area is 98% subsistence farmers who grow the crops they need to survive. They are vulnerable to drought, increasing temperatures, severe flooding, high winds, and pests. VIP is committed to improving access to sustainable food sources that can serve to shield our partner villages and farmers from the damaging effects of climate change. By focusing on implementing sustainable practices, VIPs farmers are able to thrive through their own hard work and dedication without ongoing support from VIP. By implementing initiatives like solar farm irrigation, conservation-based farming practices, crop diversification, and a variety of livestock programs, VIP and the farmers implement more resilient strategies to become food-secure, through a diverse set of interventions.

COMMUNITY FOOD BANKS

Community food banks offer a way for communities to combine and store food yielded from their harvests. In our impact area, VIP promotes and oversees 19 village grain banks. This year, 57 new households joined the village grain banks that helped vulnerable families survive the “hungry season” by storing maize and other crops until food is no longer scarce or prices for these crops have increased. 91 metric tons (200,621 pounds) of the staple maize crop were stored in the grain banks.

FARMING

Agriculture is the main source of food production in our partner villages. Villagers grow the food they need to survive in household gardens or on small plots of land they may have acquired. Because of this, our approach focuses significantly on improving farming techniques through training, sharing innovative technology, and implementing more sustainable practices. This year farming initiatives included the following:

- Solar irrigation projects at Samani and Muluwira villages continued to irrigate land using solar-powered pumps to transport water to crops. This past year, 63 households grew various crops during the dry season;
- 200 cassava bundles were passed on to 100 households, and 2,647 kg of groundnut seeds to 522 households, for seed multiplication and crop and nutritional diversification;
- Training was provided in Biochar production, a new technology that provides cheap, but effective means of reducing the effects of climate change on people and the environment; and
- 332 farmers across 26 villages practiced conservation farming techniques that make better use of land resources, enabling them to have improved harvests with less fertilizer and other inputs.

THE SAMANI AND MULUWIRA SOLAR IRRIGATION SITES

The Samani and Muluwira irrigation schemes introduced in recent years continued benefitting local farmers in Sakata throughout 2020. These irrigation sites offer plots of land with piped water configurations to households who would otherwise be subject to natural rainfall. In addition, maintenance and operations training was given to ten participants.





“At the moment fertilizer is expensive. The prices go up every year. Fertilizer destroys soil fertility, but manure restores it. That’s why I want others to learn about Conservation Farming and benefit from practicing these sustainable methods. This would help everyone.”

- Cassim Inussa,
Mkwezaziya Village, VIP Lead Farmer



CONSERVATION AGRICULTURE: ELUBE KAZEMBE - LITI VILLAGE

Mai Elube Kazembe of Liti village is 60 years old and is a 3-year conservation agriculture (CA) farmer. In 2017, she lost her husband and eventually went to stay with one of her three children. It was during that time that Mai Elube was introduced to conservation agriculture through VIP.

With only .02 hectares (about 2,000 sqft.) of land, Mai Elube was committed to implementing the new farming techniques despite the odds and obstacles that came against her. In 2019 her plot suffered a fire that damaged her crops. She managed to source crop residues from a nearby field and hired an oxcart to take them to her garden and re-mulch her field.

Now almost three years later, she is recognized as one of the best and most hardworking CA farmers around. She placed second in the CA competition hosted by VIP which compared the harvests of 20 local CA farmers. She harvested maize (19 bags), pigeon peas (1.5 bags), cassava (1 bag), and groundnuts (23 bags) which she mostly sold at the market for income. In an area where many families run out of food during the “hungry season,” she celebrates that “with these harvests, [I] am sure our food will take me to the next harvest.”



Elube Kazembe hand weeding conservation agriculture maize field

VIP and the farmers implement more resilient strategies to become food-secure, through a diverse set of interventions.



LIVESTOCK PROGRAMS

Livestock represents an important source of nutrition and income for villagers. To support healthy livestock and to protect against disease, VIP vaccinated 19,037 chickens from 1,638 households against Newcastle disease. In addition, VIP treated 2,403 goats from 689 households for worms. Through VIP's animal pass-on program, recipients of goats agree to give the offspring to another vulnerable family. This past year, 79 vulnerable households received goats, and 8 Boer male goats were distributed for cross-breeding and improvement of the genetic stock of the herds. In addition, 11 demonstration goat houses were constructed in 11 villages to model improved housing methods for goats.



BEEKEEPING ACTIVITIES

In partnership with trained beekeepers in the USA, VIP has helped to develop a community of beekeepers in our catchment area. Through training, monitoring and evaluation, villagers formed a beekeeping cooperative to bottle and sell their products at market. This past year the trained beekeeping cooperative sold 180.5kgs of honey worth \$1,355 (MWK 1,083,000) thus improving their economic stability. Some members also visited other local cooperatives to exchange ideas and lessons learned.

TREE PLANTING IN SCHOOLS

VIP supported schools by purchasing and distributing tree seedlings to establish school woodlots, with a total of 2,300 seedlings distributed among 5 primary schools. As an integral part of the ecosystem, increasing the number of trees improves a myriad of things, from oxygen levels, to pollination, and reduced water pollution to name a few. Furthermore, the act of planting trees in schools helps teach youth responsibility and the importance of taking care of the environment.

By supporting food security measures, VIP helps villages diversify their agricultural holdings and improve resiliency to the effects of climate change, thereby allowing villagers to live beyond subsistence farming.

VACCINATION AND ECONOMIC IMPROVEMENT

Months 2020	# Chickens Vaccinated	# Households Involved
March	4,992	475
August	7,939	671
December	6,106	492
Total	19,037	1,638

DEMONSTRATION/ LEARNING FARM - GUARD HOUSES

VIP acquired a little over 50 acres of land to develop a learning and demonstration farm in 2020. So far, construction on several guard houses have been completed.



ECONOMIC DEVELOPMENT

VIP is committed to creating economic opportunities so that the villagers of Malawi can financially support themselves. Education, water, food security, infrastructure, and health care are all necessary to break the cycle of extreme poverty, but without ongoing, sustainable means of generating income these resources are not sufficient. What is the use of growing surplus crops if there is no market for them? How will education transform the lives of young people if there are no jobs for recent graduates? There need to be economic opportunities as well. VIP works to train and equip individuals in our impact area through the following:



“My family has food throughout the year since I joined the (maize) club because we always have farm inputs available. I pay off my loan in time as I am assured of farm inputs at the beginning of each growing season.”

- Mai Chrissie Paundi, *Revolving Loan For Maize Clubs*

SMALL BUSINESS CREATION

2020 saw increased numbers of small businesses thriving as hundreds of people continued to move from extreme poverty to a sustainable lifestyle by finding ways to make money. Villagers, through a variety of VIP-initiated programs, were trained in many areas of business such as beekeeping, tailoring, metalworking, conservation agriculture, and hairstyling. In particular, beekeeping continued to flourish in 2020 with beekeepers selling 180.5 kgs of honey worth \$1,355 (MWK 1,083,000).

SMALL BUSINESS LOANS

VIP also provided loans to farmers through the Seed Producer Revolving Loan program. Here, farmers use funds to buy seed, and then after the harvest, they sell surplus seeds to the local communities and repay the loans. These “seed multipliers” generate thousands of Malawian Kwacha (MWK) in income for the farmers as well as helping the local economy by allowing farmers to purchase seed from their neighbors at better prices.

VILLAGE SAVING AND LOAN PROGRAMS

In addition, Village Savings and Loan programs (VSLs) continue to transform the lives of their members. VSLs teach those involved how to save money and combine their resources to make loans to other members. In 2020 there were 52 VSLs with 841 members as compared to 29 groups with 250 members in 2019. During the year, the clubs were trained in business management and financial analysis and assessment. Over \$36,000 (MWK 28,105,220.00) was saved by the 52 VSLs! The members used their money to start small businesses, pay for their children’s school fees, buy livestock, purchase metal sheet roofing to replace their leaky thatched roofs, and even build brand new houses!

TRANSPORTATION

The purchase of bicycles for income generation (e.g. as a means to transport goods to market or operating as a taxi) represents one of the most successful enterprises a villager can establish. Now, there are hundreds of bicycles in VIP’s impact area, and some of the VSL participants have even been able to purchase motorcycles. This is an extraordinary development for people who just a few years ago could only get around on foot.



SMALL BUSINESS LOANS - RICE & MAIZE REVOLVING LOAN

Club Type	Number	Total Revolving Loan Amount (MWK)	Repaid Amount (MWK)	Balance (MWK)	% Recovery
Maize	17	10,502,357	8,875,013	1,627,344	85 %
Rice	8	4,361,914	1,852,780	2,509,134	42 %

*Due to rains ending early causing drought conditions for rice farmers are still paying back loans.

EDUCATION

VIP understands the importance of education and early childhood development, and accordingly, we focus significant resources on strengthening local capacity to support these aims.



The new school remained unopened until early 2021 due to the closure of all schools across the country because of COVID-19.



Education is key to improving livelihoods. By supporting education within the villages, VIP contributes to the national growth of literacy, higher education, and the future development of a new Malawian workforce.

ONE HEART SECONDARY SCHOOL

The highlight for us this year was the construction, with substantial support from our partners at Valley Presbyterian Church, of the One Heart Secondary School. For many households in the surrounding community, there was no secondary school close enough for their children to walk to, causing many students to discontinue their education beyond primary school (equivalent to 8th grade). These students will now have the tools to advance their education and perhaps go on to university.

SAKATA, CHIMPENI and MAFUWA PRIMARY SCHOOLS

Construction of the Sakata and Chimpeni Primary Schools continued and we also reconstructed a school block at a new school partnership - the Mafuwa Primary School. With increased classrooms, these schools will directly impact the lives of thousands of children who will now have access to an education.

SCHOOL SCHOLARSHIPS

VIP supported 93 students from vulnerable households in government secondary schools, by providing school fees, school uniforms, and stationery. In addition, VIP provided them with training on life-sustaining skills, including setting life goals, improving self-esteem and self-control, reproductive health issues, HIV and AIDS, essay writing, self-awareness, and spiritual development. VIP also provided scholarships and laptops for 20 university students. These students were also provided with various counseling sessions to help them plan their futures, including sessions devoted to helping them thrive during the pandemic. By removing the financial boundary to higher education, VIP ensures that more Malawian students have the tools and opportunities to lift themselves out of poverty.

VOCATIONAL TRAINING

VIP supported vocational training for 28 students at various vocational training centers in Malawi, with training provided in mechanics (8 students), plumbing (8), tailoring (8), and welding (4) to help provide employment opportunities for these youth. VIP also supplied the students with safety clothes and boots. It is expected that the vocational training will create employment among the targeted youths.

TEACHER TRAINING

VIP conducted a training workshop for 51 Community-Based Childcare Center (CBCC) caregivers from 16 early childhood development centers to enhance their knowledge and skills in child hygiene, positive classroom environment, child nutrition, and overall child care. The CBCCs are managed by parent oversight committees that VIP trains in resource mobilization and school administration. The CBCCs and Parent Committees, working together, ground the centers in the community and enable long-term success and sustainability.

INFRASTRUCTURE

Infrastructure represents a core component of VIP's work in eradicating poverty in our partner villages. From the building of schools, bridges, and fences, infrastructure is embedded in almost every VIP project.

MAFUWA PRIMARY SCHOOL

VIP completed construction at Mafuwa Primary School which included additional school blocks and toilets. The Mafuwa community helped to build the bricks and provided river sand to aid in the construction process, and VIP hired a local contractor to execute the plans. With oversight from the school committee, the VIP Construction Officer, Joe Majamanda, and the local governmental authorities, construction on the project is almost fully complete.

CHIMPENI PRIMARY SCHOOL

After heavy rains, toilets at Chimpeni Primary School collapsed and forced students to use a grass-covered shelter as a temporary measure. The school committee and chiefs sought VIP's assistance to have the toilets rebuilt. Improved toilets were constructed with a strong concrete base to prevent a recurrence of the damage from the storms. In addition, the new facility was also designed to accommodate disabled persons, providing greater access for all students.

ONE HEART SECONDARY SCHOOL

The scarcity of secondary schools in our impact area has long meant that students who continued their education beyond primary school were forced to walk long distances to and from school, creating a high drop-out rate. Working with local leadership, VIP identified an underserved area for the establishment of a secondary school as the local chief came forward to provide land. VIP then hired a contractor that supplied the project with bricklayers, carpenters and painters. Mr. Majamanda, the VIP Construction Officer, supervised the project and inspections were carried out by the representatives from the District Council Office.

In 2020, VIP completed Phase II of construction which included the construction of a semi-detached house, a septic tank for the Administration, pit latrines (for staff and students), a sign post and landscaping. The scheduled Fall 2020 opening was delayed due to the pandemic.

DEMONSTRATION/LEARNING FARM - GUARD HOUSES

In 2020, VIP acquired land for the purpose of developing a demonstration and learning farm. VIP has begun developing the property by building guard houses.

Working with local leadership, VIP identified an underserved area for the establishment of a secondary school.





TREE PLANTING IN PRIMARY SCHOOLS

VIP continued to support the communities with reforestation efforts by purchasing and distributing tree seedlings to the local schools as they establish school woodlots. A total of 2,300 seedlings (mainly keshya & mtangatanga) were distributed to and planted by Sakata, Nyambwe, Mafuwa, Matawale and Makumba Primary Schools. This is one of the ways schools participate in VIP's value of reciprocity. They plant trees and VIP develops their building infrastructure.

IMPROVED COMMUNITY PIPED WATER SYSTEM

VIP improved 18 community piped water points by developing new points and/or revamping old lines and updating the sanitation standards of old community taps. As part of the community's contribution and to support ownership and sustainability, the targeted communities were asked to provide river sand, burnt bricks and labor towards the water points. These community water taps will ensure that women who are often tasked with fetching water will not have to walk long distances to reach the nearest water point. In addition, this initiative will provide a greater clean water supply to our impact area to limit diarrheal diseases. The 18 water points will be used by over 360 households across 12 villages.



HEALTH CARE

VIP is dedicated to improving the health and wellbeing of Malawians and improving their access to quality health care. In 2020, given the COVID-19 global pandemic, there was a heightened focus on ensuring the health of our VIP staff and the communities we serve.

COVID-19 is a disease caused by a new coronavirus called SARS-CoV-2 which was first reported to the World Health Organization in December 2019 in Wuhan, People's Republic of China. The virus quickly spread globally, especially to developed communities where human mobility and the proximity of living conditions heightened the speed of outbreaks. The first case in Malawi was reported in April 2020. Like many countries around the globe, Malawi instituted health policies to help prevent the spread of the virus including closing its borders in late March 2020, requiring mask-wearing and social distancing guidelines. Total cases reported in 2020 were 6,583 and reported deaths were 189. No cases or deaths occurred in our staff or were reported in the villages we serve.



PREVENTATIVE HEALTH INITIATIVES

Especially important this year were preventative health measures. Special efforts were made to progress training on proper sanitation and handwashing techniques. Handwashing stations were developed outside of pit latrines with a goal to implement these in over 80% of the villages. As a result of targeted communications, it was found that 148 households constructed new latrines and handwashing facilities. In total households with pit latrines increased from 85% to 96%. Health and nutrition education continued to be delivered through a Care Group model, where cluster leaders and health promoters trained village community members on various topics like hygiene, maternal health and nutrition, management of acute malnutrition and childhood illnesses. Nutrition was also another important area of focus. The Care Groups learned to diversify the food they were growing and cooking to add valuable nutrition to their diets. This work was done in collaboration with the livestock initiatives which helped to distribute chickens, goats, and rabbits.

KALUPE AND KHANDA MEDICAL CLINICS

Weekly medical clinics were conducted through a successful partnership with H-Parker Hospital and the Christian Health Association of Malawi. These clinics provided valuable services to assist these vulnerable communities in accessing affordable medical care. In 2020, total attendance at the clinics reached 3,788 with the majority of patients being children under the age of 5. Malaria testing and treatment continued to be the highest unmet need and was the most common disease treated. Identification of patients with more critical health needs was also done with 15 patients referred for care to Zomba Central Hospital.

HOME VISITS

Not all vulnerable patients are able to make the journey to our clinics or to a health center for care. Our VIP Health and Nutrition Officer, Madalitso Chakani, working in partnership with clinical officers from local health centers, made routine home visits to provide clinical treatment, care, education, and support to those clients. In 2020, she saw 42 patients assisting them with chronic conditions like hypertension, wound care, stroke, diabetes, AIDS, and cancer. In addition, they were provided a corn-soybean blend for porridge to support their nutritional needs and to help manage issues of hunger and food insecurity.



In 2020, there was a heightened focus on ensuring the health of our VIP staff and the communities we serve.



KHANDA AND KALINO DENTAL CLINICS

Dental clinics were conducted monthly through a partnership with the Ministry of Health Dental Staff. The clinics were able to treat 989 patients with dental extractions and 40 patients with dental fillings. The clinics also provided much needed education on oral hygiene.



MEDICAL & DENTAL TRIPS

MARCH 2020 MEDICAL & DENTAL TEAM PARTICIPANTS

Team Lead: Lucy Goeke, NP

Frank Albano
Jynn Albano, NP
Molly Babb
Laura Bartos
Molly Bauer
Olivia Bell
Lauren Deddens
Holly Duncan
Kaitlin Duncan
Kaitlyn Fair
Ope Fawole
Kaitlyn Fields
Tom Goeke
Russell Goodrich
Kathleen Grant
Abby Huston
Erin Joyce, NP
Jaclyn Maushart
Tessa Mills
Megan Sullivan, NP
Carla Tuan
Shawna Whitford, RN

In March, 2020, VIP conducted a medical and dental trip.

The medical and dental team from the USA was composed of physicians, advanced practitioners, dental assistants, nurses, nursing students, and support staff who traveled to Malawi to



serve the sick and vulnerable. Working hand-in-hand with Malawian medical personnel, our teams offered medical, dental, and vision care at three remote clinics. Together, they treated many patients suffering from diseases and conditions unseen in America, like malaria and parasites. The global COVID-19 pandemic caused the team to depart early but not before serving almost 7,000 patients. Additional planned Medical and Dental Mission trips were cancelled due to travel restrictions and health concerns related to the pandemic.



FRIENDSHIP TRIPS - BEEKEEPING

Friendship Trips are not Mission trips. VIP's approach supports the development of lasting relationships by bringing together people who although may have different backgrounds, all share the same human experience. While in Malawi, trip participants spend time in community - sharing meals, working together on projects, and worshipping with our Malawian partners. People's lives are transformed as they work alongside one another and build genuine relationships.

Unlike past years, 2020 Friendship Trips were unavoidably halted due to the pandemic. VIP's beekeeping team was able to travel to Malawi in February. The beekeeping team included veteran beekeepers, farmers and others interested in beekeeping who trained Malawian beekeeping cooperatives and conducted workshops focused on honey extraction. The team also inspected local apiaries to identify areas for improvement and provide recommendations to local beekeepers. Other activities included inspecting for parasites, exploring ways to make soap from readily available ingredients, and challenging local beekeepers to do advanced beekeeping activities like working without gloves.

FEBRUARY 2020 FRIENDSHIP TRIP PARTICIPANTS

Team Lead: Tim Schuler

Mark Hardenbrook

Bob Kloss

Lois Meyers

Jeff Smucker

Ted Smucker

Dave Specca

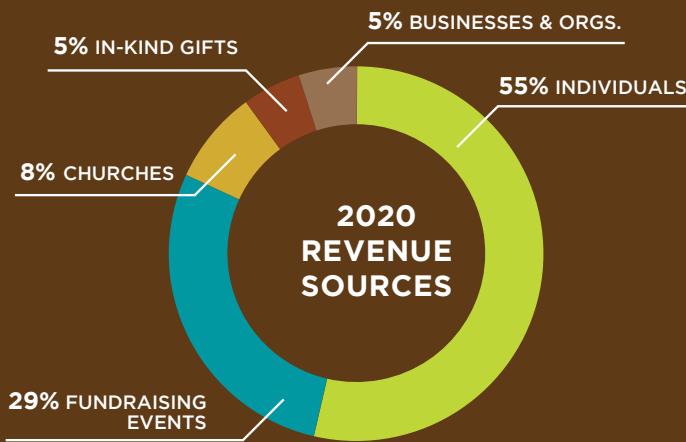
Grant Stiles

“The VIP family is like a beehive - it has many members each doing the things that they are good at - just like a beehive. And it would not function if every member didn't do their part.”

- Tim Schuler, Former New Jersey State Apiarist

FINANCIALS

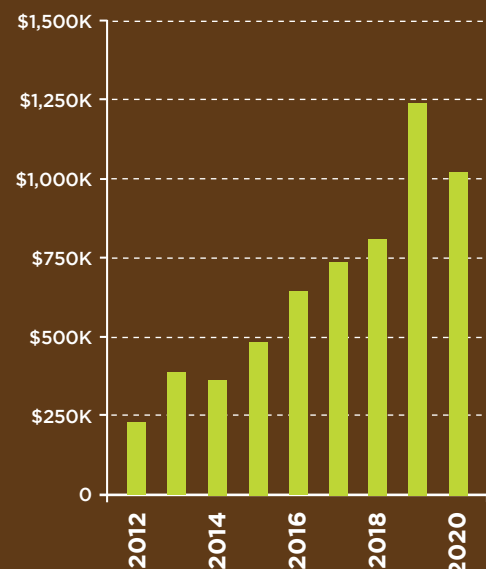
2020 was a year flanked by chaos and uncertainty. We looked to God, as we always do, to sustain, guide, and encourage us when things seem like they are falling apart - and He did. He took our faith and multiplied whatever we offered him. The VIP family - churches, businesses, and individuals - showed up like never before. We did our first-ever virtual Water Walk and were able to raise over \$220,000, far exceeding our fundraising goal. We knew we were a part of something incredible, but this year proved it is truly miraculous!



Thank you to all our volunteers who gave countless hours and so generously donated their time and expertise to help eradicate extreme poverty in rural Malawi. Our brothers and sisters in Malawi are incredibly blessed!

It was more important than ever to hold true to our fiscal policies as well. We recognize that the support we received in 2020 was sacrificial for most, and we believe we must be excellent stewards of the resources God entrusts to us. Program operations will always be our number one priority. In support of this, we spent 80.63% on program operations and relied heavily on input from our Malawian staff to set program priorities. And though it was challenging, we took great strides to advance on each of our major initiatives.

REVENUE GROWTH





OUR DONORS

Monthly Donors

Frank & Jynifer Albano
Molly Babb
Kymberlaine Banks
Laura Bartos
Janis Bates
Annie & Brian Belden
Karen Brown & James Takasugi
Jackie & Carl Clippinger
Trish & Mike De Ieso
Benjamin De Winkle
Lauren Deddens
Dr. Josephine Duh
Dr. Barbara Edwards & Thomas Christensen
Allison Gardner
Michael Goeke & Macy Carman-Goeke
Tom & Lucy Goeke
Russell & Bonnie Goodrich
Matthew Hammell
Carolyn Harmes
Katy Heinzl
Clay Heinzl-Nelson
Jordan Heinzl-Nelson
Terra Heinzl-Nelson
Abby Huston
Edward & Charlene James
CAPT. Steven Maya
Harry McCabe
Steve & Sheryl Mesa
Debra & Sam Price
Anna Fe & Dennis Rebadavia
James Reist
Ed Rhoad
Sandra Riguzzi
Jonathan & Missy Stinson
Megan Sullivan
Dr. Manoel & Claudia Tamassia
Bobby & Christine Teahan
Cleveland Timmons
Diana Trepesowsky
Carla Tuan
Dr. Sarah Vick
Joe & Sharon Vito
Bob & Loretta Wells
Margaret Wright
Fadi Zanayed

OUR DONORS

\$50,000+

The Doherty Family
The Goeke Family
Valley Presbyterian Church
Trudi Veldman & Robert Kamen

\$20,000-50,000

Allentown Presbyterian Church
Phillip & Gayle Anderson
Biogen Foundation
Paul & Kim Huchro
Henry & Lois Meyers
Bob & Audrey Rhoad

\$10,000-20,000

Christ Church of Oak Brook
Timothy & Carol Golden
Eileen Gradwell
Keith Hammonds & Jacqueline Dyer
Katy Heinzl
David McAlpin
David & Laurie Pauker
Xavier University
Chris & Betsy Yates

\$5,000-9,999

AbbVie Employee Giving Fund
Mary Lou Boggus
Dr. Timothy Chase
Ed & Katherine Dean
First Presbyterian Church of Allentown
Stephen & Liz Heinzl-Nelson
Jacksonville Presbyterian Church
Steve & Jennie Mihelich
John & Randa Nelson
Donnie and Dana Robbins
Jeff Smucker
Kim Starr
Grant Stiles

\$1,000-4,999

James & Susannah Adelson
Frank & Jynnifer Albano
Allentown Auto Body, LLC
(Craig & Teresa Ludwig)
Allentown Central Catholic
High School
Richard, Mary & Grace Anderson
Aptargroup Charitable Foundation
James & Kathy Arner
Liz Beasley
Martin & Nancy Black
Richard & Wendy Bullotta
Canyon Creek Presbyterian Church
Cape Charles Baptist Church
Cathedral of St. Catherine of Siena
Alan Chech
Chevron Matching Employee Fund
Cornerstone Presbyterian Church
Covenant Presbyterian Church
Jane Crain
Ralph Crome
Paul Cross
Mike & Trish De Ieso
Dan & Nikki Domenech
Bob Dorger
Rev. Frederick & Margaret Doscher
Chris & Karen Ebling
Wesley & Mindy Flach
Michael & Stacy Foy
John Gaut & Cynthia Uber
Michael Goeke & Macy Carman-Goeke
Robert & Linda Hall
Mark Hardenbrook
Carolyn Harmes
Clay Heinzl-Nelson
Terra Heinzl-Nelson
Greg & Kathy Herceg
Bart & Pattie Hubbard
John & Sandra Hurlbert
Illinois Tool Works Foundation
Charles Ilsley

Elizabeth Iwaoka
Erin Joyce
Deland & Nicole Kamanga
Ian Keller
James Kiernen & Julie Yi
Roney & Jem Alvarenga Lima
Mary Anne Mattek
Harry McCabe
Joseph & Anita Monaghan
Nassau Presbyterian Church
New Jersey Beekeepers Association
Northeast NJ Beekeepers
Oak Grove Presbyterian Church
Tom & Stephanie Patterson
Presbyterian Church of Toms River
Tim & Joanne Reist
Ed Rhoad
Merritt Rhoad
Jack & Mary Ann Scharf
Marty & Noriko Schneiderman
Harlan Sherwood
David Shipman
Daniel Silver
Kevin & Margaret Starnes
Bryan & Elba Stockton
Megan Sullivan
Swift Creek Presbyterian Church
James Takasugi & Karen Brown
Dr. Manoel & Claudia Tamassia
Carla Tuan
Fred Van Looy & Barbara Dougherty
Van Wallingham Foundation
Dr. Sarah Vick
Robert & Loretta Wells
Worldwide Logistics Inc.
The Wrestle Fund
Margaret Wright



\$500-999

Virginia August
 Rick & Jana Baldwin
 Thom & Sue Bechamps
 Brian & Annie Belden
 Wil Borkowski & Kelly Owens
 Broadridge Financial Solutions
 John Buzby
 Lisa Cherukara
 Chubb Charitable Foundation
 Church of the Covenant
 Carl & Jacqueline Clippinger
 Convent of the Sacred Heart
 Laura and Rob Cranston
 Rich & Dona Daesener
 Kevin & Kim Daly
 Diane Delorenzo
 Dr. Josephine Duh & Takuo Sugaya
 Marjorie Edwards
 Bill & Cindy Erickson
 Andrew & Catherine Eshelman
 George & Patty Ferguson
 Robert & Gina Finn
 Tom and Celeste Foster
 Mary Foy
 James & Jennifer Garst
 Marie Gradwell

James Greene
 Gary & Kathleen Grossi
 Rich & Eileen Heddy
 Kevin & Allison Heide
 Jordan Heinzl-Nelson
 James & Elizabeth Hughes
 Adam & Carissa Joyce
 Glenn Thomas & Kimberlynn Kleasen
 John Liu
 David Loevner
 Kevin MacDonald
 Mary Anne Mahin
 Jeff and Christina Marcello
 MAS Corporation
 Steven & Jihyang Maya
 Christopher & Kathleen Michie
 Laurel Miller
 Steven & Jeannine Mortelliti
 Jane Muha
 Dewey and Jem Nelson
 Robert Olkowitz
 Karen Pepler
 Sam & Debra Price
 The Ravindranath Fund of the Princeton
 Area Community Foundation
 Dennis & Anna Fe Rebadavia

Kenneth & Nancy Reinhardt
 Brian & Kathy Ricci
 Robert & Deirdre Ryan
 Chris Ryder & Nicola Abrams
 Sharon Schneider
 James & Ellie Schofield
 Michael Slezak
 Rick and Kathleen Smith
 Jonathan & Missy Stinson
 Walter Stiver Jr.
 Cleveland Timmons
 Nancy Tindall
 Diana Trepesowsky
 Wendy & Brian Weaver
 MaryAnn Wikoff
 Tom & Susan Zidlicky

Thank you to the
 hundreds of other
 supporters whose
 names are not
 listed here.

OUR PARTNERS

CHURCH PARTNERS

Allentown Presbyterian Church (Allentown, NJ)
Canyon Creek Presbyterian Church (Richardson, TX)
Cape Charles Baptist Church (Cape Charles, VA)
Christ Church of Oak Brook (Oak Brook, IL)
Church of the Covenant (Boston, MA)
Cornerstone Presbyterian Church (Jackson, NJ)
Covenant Presbyterian Church (Malvern, PA)
First Presbyterian Church of Allentown (Allentown, PA)

Jacksonville Presbyterian Church (Bordentown, NJ)
Nassau Presbyterian Church (Princeton, NJ)
Oak Grove Presbyterian Church (Southampton, NJ)
Presbyterian Church of Toms River (Toms River, NJ)
Swift Creek Presbyterian Church (Moseley, VA)
Valley Presbyterian Church (Paradise Valley, AZ)
Westminster Presbyterian Church (Trenton, NJ)

NON-PROFIT PARTNERS & ORGANIZATIONS

A to Z Literacy Movement
Americares
Bucks County Beekeepers Association
Engineers Without Borders
Essex County Beekeepers
Global Vision 2020
Heart to Heart
Jersey Cape Beekeepers Association

Knights of Columbus St. John the Baptist
The Living Water Project
MAP International
Monroe County Beekeepers Association
Northeast NJ Beekeepers
Texas Presbyterian Foundation
Vitamin Angels

ACADEMIC INSTITUTIONS

Allentown High School students
Convent of the Sacred Heart
University of Delaware

Upper Freehold Regional School District
Xavier University

BUSINESSES & EMPLOYEE MATCHING DONORS

AbbVie
Allentown Auto Body
Aptargroup Charitable Foundation
Benco Dental
Biogen Foundation
Broadridge Financial Solutions
CCL Label
Chevron Matching Employee Funds
Chubb Charitable Foundation
Dynatec Systems, Inc.
GeoBlue (Worldwide Insurance Services, LLC)
Illinois Tool Works Foundation
Investure, LLC
Johnson and Johnson

JYL LLC
Kline's Barber Shop
Mill Pond Arts
Network for Good
Peppler Funeral Home
Perritt Laboratories, Inc
Sebastiano Nini, Inc
TransUnion
UBS
Village Pharmacy
Walker & Dunlop LLC
Worldwide Logistics Group
W. Thomas Watkinson Engineering LLC



LOOKING FORWARD

As I reflect on 2020 and the many challenges it held, I am also reminded of the many ways in which God so generously blessed VIP. Each staff and board member, volunteer, supporter and prayer warrior contributed to the many lives changed, including our own! The creation of a virtual Water Walk, a completely new Giving Tuesday and Year-End appeal strategy, and working entirely virtually with our staff in Malawi were completely new experiences that I believe we navigated extremely well. I humbly leaned on the VIP family and as always they surpassed every expectation.

I am truly grateful to you all - thank you.

Looking forward, I hope that VIP continues to grow while maintaining its deeply relational nature. I am excited at the prospect of the many new initiatives that are developing and the impact they will have on our brothers and sisters in Malawi like the Khanda Health Center and the Demonstration/Learning Farm. I feel confident that we are positioned to tackle whatever challenges will come and more importantly, I know that with God all things are possible.

Thank you!

With never-ending hope,

Liz Heinzl-Nelson

Executive Director



“My first experience with VIP was on a medical and dental mission trip. We were so impressed with how VIP was building sustainable projects within the villages and truly partnering with the villagers to understand their needs. Seven trips later and I am still learning and growing from my friends in Malawi!” - Eileen Gradwell





“VIP conducts multiple friendship trips each year and is all about training and support so that established positive practices, infrastructure, and programs continue and gain strength over time.” -Anita Chang Monaghan





“Villages in Partnership has changed not only my life, but the lives of thousands on the ground in Malawi. I have been involved with VIP for three years and have visited Malawi twice and seen so much progress in such a short time. The organization continues to grow and evolve, furthering the mission of expanding access to water, education, healthcare, food and financial security, and improved infrastructure for the villages in the catchment area.” - Stephanie Patterson